

PART NR.
AE-ZZ443

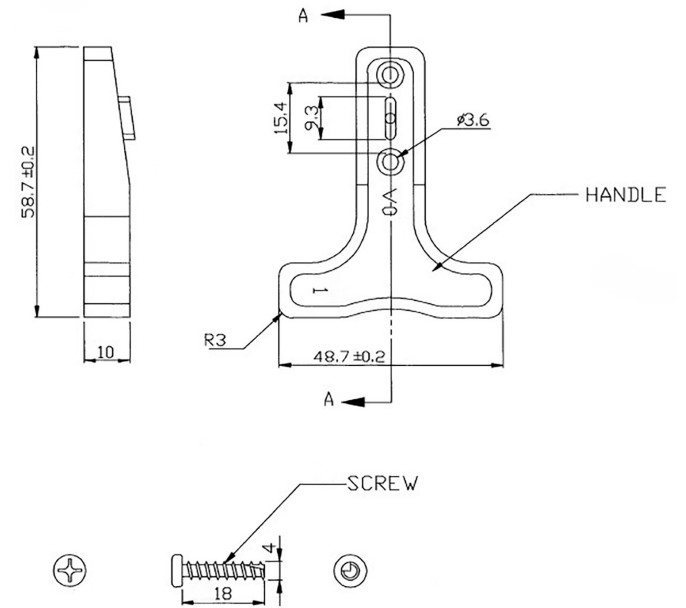
COUNTRY OF ORIGIN
Taiwan

STANDARDS
REACH and RoHS compliant

CHARACTERISTICS

- Handle to be used with 50A connectors
- Including 2x screws

PHOTO / TECHNICAL DRAWING



DIMENSIONS

L x W x H:

58,7 x 48,7 x 10 mm

TECHNICAL SPECIFICATIONS

Material:
Operating temp:
Max. rating:

Polycarbonate (PC), red
125°C
600V