

NON-INSULATED DIN 46234 BRAZED SEAM RING TERMINALS

PART NR.

See dimensions table

COUNTRY OF ORIGIN

Taiwan

STANDARDS

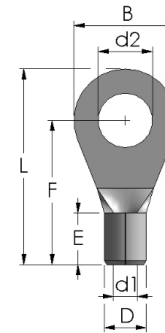
REACH and RoHS compliant

UL certified

CHARACTERISTICS

- Brazed seam

PHOTO / TECHNICAL DRAWING



TECHNICAL SPECIFICATIONS

Material:	Copper, tin plated
Max. amperage:	0,5~1,5 mm ² 18A
	1,5~2,5 mm ² 30A
	4~6 mm ² 50A
	10 mm ² 70A
	16 mm ² 95A
	25 mm ² 125A
	35 mm ² 170A
	50 mm ² 230A
	70 mm ² 265A
	95 mm ² 310A
	120 mm ² 360A
	150 mm ² 445A
	185 mm ² 505A
	240 mm ² 545A

DIMENSIONS

Wire size	Part nr.	d2	B	F	L	E	D	d1	Packed	UL
26~22 AWG 0,1~0,5 mm ²	DIN 2-0.5B	2,2	5,0	10,0	12,5	4,0	2,2	1,0	1000	✓
	DIN 2.5-0.5B	2,7	5,0	10,0	12,5	4,0	2,2	1,0	1000	✓
	DIN 3-0.5B	3,2	5,0	10,0	12,5	4,0	2,2	1,0	1000	✓
	DIN 3.5-0.5B	3,7	6,0	12,0	15,0	4,0	2,2	1,0	1000	✓
	DIN 4-0.5B	4,3	6,5	12,0	15,2	4,0	2,2	1,0	1000	✓
	DIN 5-0.5B	5,3	8,0	12,0	16,0	4,0	2,2	1,0	1000	✓
22~16 AWG 0,5~1,5 mm ²	DIN 2.5-1B	2,7	6,0	11,0	14,0	5,0	3,5	1,6	1000	✓
	DIN 3-1B	3,2	6,0	11,0	14,0	5,0	3,5	1,6	1000	✓
	DIN 3.5-1B	3,7	6,0	11,0	14,0	5,0	3,5	1,6	1000	✓
	DIN 4-1B	4,3	8,0	12,0	16,0	5,0	3,5	1,6	1000	✓
	DIN 5-1B	5,3	10,0	13,0	18,0	5,0	3,5	1,6	1000	✓
	DIN 6-1B	6,5	11,0	15,0	20,5	5,0	3,5	1,6	1000	✓
	DIN 8-1B	8,4	14,0	16,0	23,0	5,0	3,5	1,6	1000	✓
	DIN 10-1B	10,5	18,0	18,0	27,0	5,0	3,5	1,6	1000	✓
16~14 AWG 1,5~2,5 mm ²	DIN 3-2.5B	3,2	6,0	11,0	14,0	5,0	4,1	2,3	1000	✓
	DIN 3.5-2.5B	3,7	6,0	11,0	14,0	5,0	4,1	2,3	1000	✓
	DIN 4-2.5B	4,3	8,0	12,0	16,0	5,0	4,1	2,3	1000	✓
	DIN 5-2.5B	5,3	10,0	14,0	19,0	5,0	4,1	2,3	1000	✓
	DIN 6-2.5B	6,5	11,0	16,0	21,5	5,0	4,1	2,3	1000	✓
	DIN 8-2.5B	8,4	14,0	17,0	24,0	5,0	4,1	2,3	1000	✓
	DIN 10-2.5B	10,5	18,0	18,0	27,0	5,0	4,1	2,3	1000	✓
	DIN 12-2.5B	13,0	19,2	16,0	30,6	5,0	4,1	2,3	1000	✓

Wire size	Part nr.	d2	B	F	L	E	D	d1	Packed	UL
12~10 AWG 4~6 mm ²	DIN 4-6B	4,3	8,0	14,0	18,0	6,0	5,8	3,6	1000	✓
	DIN 5-6B	5,3	10,0	15,0	20,0	6,0	5,8	3,6	1000	✓
	DIN 6-6B	6,5	11,0	16,0	21,5	6,0	5,8	3,6	1000	✓
	DIN 8-6B	8,4	14,0	19,0	26,0	6,0	5,8	3,6	1000	✓
	DIN 10-6B	10,5	18,0	21,0	30,0	6,0	5,8	3,6	1000	✓
	DIN 12-6B	13,0	19,0	26,5	36,0	6,0	5,8	3,6	1000	✓
8 AWG 10 mm ²	DIN 4-10B	4,3	10,0	16,0	21,0	8,0	7,0	4,5	100	✓
	DIN 5-10B	5,3	10,0	16,0	21,0	8,0	7,0	4,5	100	✓
	DIN 6-10B	6,5	11,0	17,0	22,5	8,0	7,0	4,5	100	✓
	DIN 8-10B	8,4	14,0	20,0	27,0	8,0	7,0	4,5	100	✓
	DIN 10-10B	10,5	18,0	21,0	30,0	8,0	7,0	4,5	100	✓
	DIN 12-10B	13,0	22,0	23,0	34,0	8,0	7,0	4,5	100	✓
6 AWG 16 mm ²	DIN 5-16B	5,3	11,0	20,0	25,5	10,0	8,5	5,8	100	✓
	DIN 6-16B	6,5	11,0	20,0	25,5	10,0	8,5	5,8	100	✓
	DIN 8-16B	8,4	14,0	22,0	29,0	10,0	8,5	5,8	100	✓
	DIN 10-16B	10,5	18,0	24,0	33,0	10,0	8,5	5,8	100	✓
	DIN 12-16B	13,0	22,0	26,0	37,0	10,0	8,5	5,8	100	✓
4 AWG 25 mm ²	DIN 5-25B	5,3	12,0	25,0	31,0	11,0	10,8	7,5	100	✓
	DIN 6-25B	6,5	12,0	25,0	31,0	11,0	10,8	7,5	100	✓
	DIN 8-25B	8,4	16,0	25,0	33,0	11,0	10,8	7,5	100	✓
	DIN 10-25B	10,5	18,0	26,0	35,0	11,0	10,8	7,5	100	✓
	DIN 12-25B	13,0	22,0	31,0	42,0	11,0	10,8	7,5	100	✓
	DIN 16-25B	17,0	28,0	35,0	49,0	11,0	10,8	7,5	100	✓
2 AWG 35 mm ²	DIN 6-35B	6,5	15,0	26,0	33,5	12,0	12,6	9,0	50	✓
	DIN 8-35B	8,4	16,0	26,0	34,0	12,0	12,6	9,0	50	✓
	DIN 10-35B	10,5	18,0	27,0	36,0	12,0	12,6	9,0	50	✓
	DIN 12-35B	13,0	22,0	31,0	42,0	12,0	12,6	9,0	50	✓
	DIN 16-35B	17,0	28,0	36,0	50,0	12,0	12,6	9,0	50	✓
1/0 AWG 50 mm ²	DIN 6-50B	6,5	18,0	34,0	43,0	16,0	15,0	11,0	50	✓
	DIN 8-50B	8,4	18,0	34,0	43,0	16,0	15,0	11,0	50	✓
	DIN 10-50B	10,5	18,0	34,0	43,0	16,0	15,0	11,0	50	✓
	DIN 12-50B	13,0	22,0	36,0	47,0	16,0	15,0	11,0	50	✓
	DIN 16-50B	17,0	28,0	40,0	54,0	16,0	15,0	11,0	50	✓

Wire size	Part nr.	d2	B	F	L	E	D	d1	Packed	UL
2/0 AWG 70 mm ²	DIN 6-70B	6,5	22,0	38,0	49,0	18,0	17,5	13,0	50	✓
	DIN 8-70B	8,4	22,0	38,0	49,0	18,0	17,5	13,0	50	✓
	DIN 10-70B	10,5	22,0	38,0	49,0	18,0	17,5	13,0	50	✓
	DIN 12-70B	13,0	22,0	38,0	49,0	18,0	17,5	13,0	50	✓
	DIN 16-70B	17,0	28,0	42,0	56,0	18,0	17,5	13,0	50	✓
3/0 AWG 95 mm ²	DIN 8-95B	8,4	24,0	42,0	54,0	20,0	20,5	15,0	50	✓
	DIN 10-95B	10,5	24,0	42,0	54,0	20,0	20,5	15,0	50	✓
	DIN 12-95B	13,0	24,0	42,0	54,0	20,0	20,5	15,0	50	✓
	DIN 16-95B	17,0	28,0	44,0	58,0	20,0	20,5	15,0	50	✓
4/0 AWG 120 mm ²	DIN 8-120B	8,4	24,0	44,0	56,0	22,0	23,0	16,5	25	✓
	DIN 10-120B	10,5	24,0	44,0	56,0	22,0	23,0	16,5	25	✓
	DIN 12-120B	13,0	24,0	44,0	56,0	22,0	23,0	16,5	25	✓
	DIN 16-120B	17,0	28,0	48,0	62,0	22,0	23,0	16,5	25	✓
250/300 kcmil 150 mm ²	DIN 10-150B	10,5	30,0	50,0	65,0	24,0	26,0	19,0	10	✓
	DIN 12-150B	13,0	30,0	50,0	65,0	24,0	26,0	19,0	10	✓
	DIN 16-150B	17,0	30,0	50,0	65,0	24,0	26,0	19,0	10	✓
300/350 kcmil 185 mm ²	DIN 10-185B	10,5	36,0	50,0	68,0	28,0	28,8	21,0	10	✓
	DIN 12-185B	13,0	36,0	50,0	68,0	28,0	28,8	21,0	10	✓
	DIN 16-185B	17,0	36,0	50,0	68,0	28,0	28,8	21,0	10	✓
400 kcmil 240 mm ²	DIN 10-240B	10,5	38,0	56,0	75,0	32,0	32,3	23,5	10	✓
	DIN 12-240B	13,0	38,0	56,0	75,0	32,0	32,3	23,5	10	✓
	DIN 16-240B	17,0	38,0	56,0	75,0	32,0	32,3	23,5	10	✓