

OPEN BARREL RING TERMINAL

PART NR.

See dimensions table

MS on strip

ML loose piece

COUNTRY OF ORIGIN

Spain

STANDARDS

REACH and RoHS compliant

UL listed

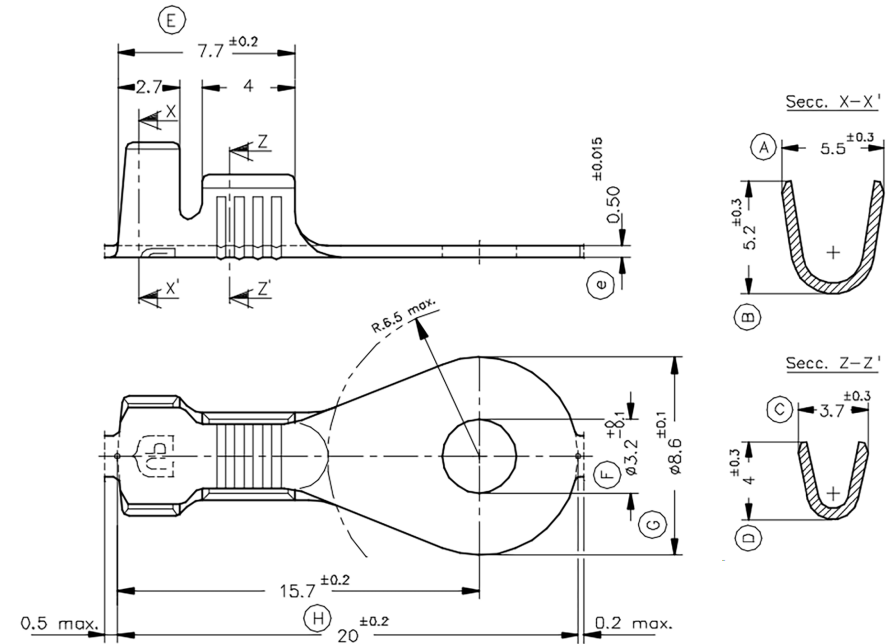
TECHNICAL SPECIFICATIONS

Material: Brass, with or without tin plating

Max. temperature: Natural 110 °C, tin plated 120 °C

Max. rated current:
 0,75 mm² 10A
 1,00 mm² 12A
 1,50 mm² 16A
 2,50 mm² 20A

PHOTO / TECHNICAL DRAWING



DIMENSIONS

Wire range	Part nr. natural	Part nr. tin plated	Hole size	H	G	Pcs/roll MOQ	UL
0,75~2,0	03-001-ML-ZA	03-001-ML-TA	Ø 3,2	20	8,6	1.000	✓

CRIMPING PARAMETERS & PULL-OUT FORCE

Terminal	Wire section (± 10%)	Conductor		Insulator	Pull-out force (N)
		Height (mm)	Width (mm)	Width (mm)	
03-001-ML-xA	0,75 mm ²	1,60 (± 0,05)	3,24 (± 0,05)	4,21 (± 0,10)	82N@60s
	1,00 mm ²	1,65 (± 0,05)	3,26 (± 0,05)	4,22 (± 0,10)	108N@60s
	1,50 mm ²	1,75 (± 0,05)	3,27 (± 0,05)	4,23 (± 0,10)	150N@60s
	2,00 mm ²	1,90 (± 0,05)	3,28 (± 0,05)	4,25 (± 0,10)	150N@60s