

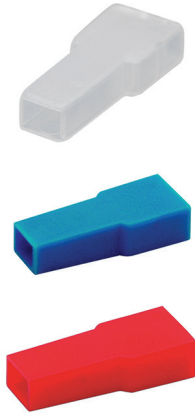
**PART NR.**  
**HFK1**  
**PH1023**  
**PH1026**

clear  
blue  
red

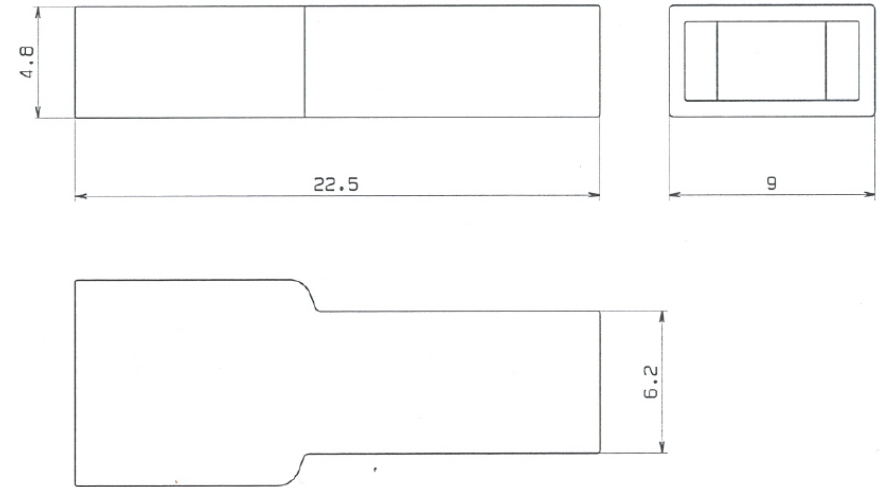
**COUNTRY OF ORIGIN:**  
**Italy**

**STANDARDS:**  
**REACH and RoHS compliant**

**PHOTO / TECHNICAL DRAWING**



**INSULATION SLEEVE FOR FEMALE 6.3 TAB OPEN-BARREL TERMINALS**



**DIMENSIONS**

L x W x H: 22,5 x 6,2/9,0 x 4,8 mm

**TECHNICAL SPECIFICATIONS**

Material: Polyethylene (PE)  
Matching terminal:

