

stripOTO BOLT-ON FUSE - OMSU SERIES

PART NR.

See rating table

COUNTRY OF ORIGIN

Turkey

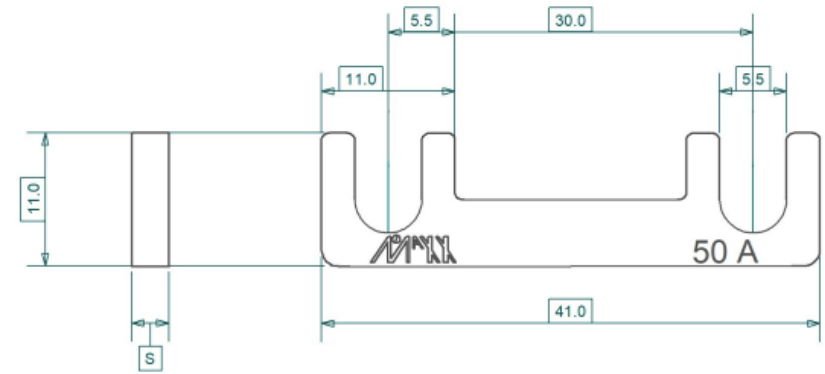
STANDARDS

REACH and RoHS compliant
DIN 72581-2

CHARACTERISTICS

- DIN 72581-2
- Element visibility
- M5 connection holes, spaced 30 mm
- Easy installation trough U-form connection
- Material, pure Zinc

PHOTO / TECHNICAL DRAWING



DIMENSIONS

L x W: 41 x 11 mm
Dimension S varies with rating

RATING TABLE

Part nr.	Rating (A)	Rating (V)	Holes
OMS-U030	30	32	M5
OMS-U040	40	32	M5
OMS-U050	50	32	M5
OMS-U060	60	32	M5
OMS-U080	80	32	M5
OMS-U100	100	32	M5

TECHNICAL SPECIFICATIONS

Material: Zinc
Hole size: M5, spaced 30 mm