

PART NR.
See parts table

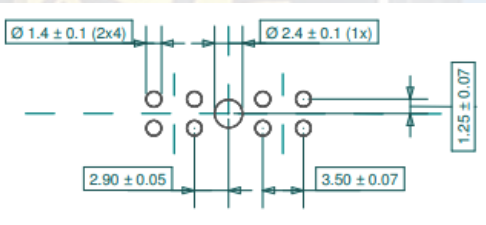
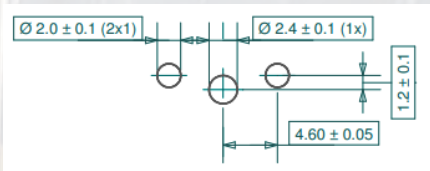
COUNTRY OF ORIGIN:
Italy

STANDARDS:
REACH and RoHS compliant
Flammability: UL94 V-0

CHARACTERISTICS

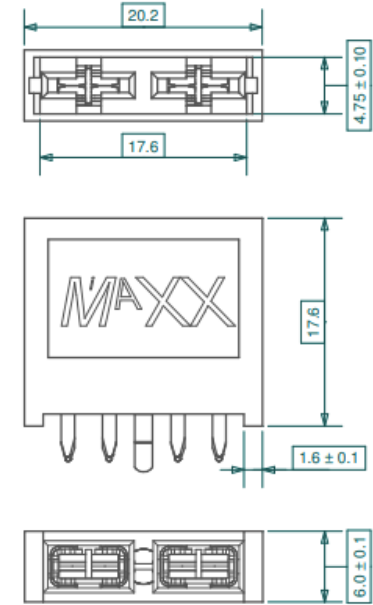
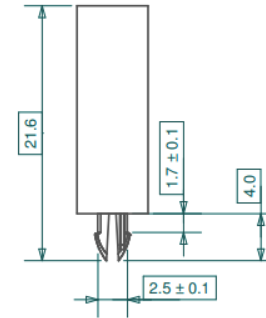
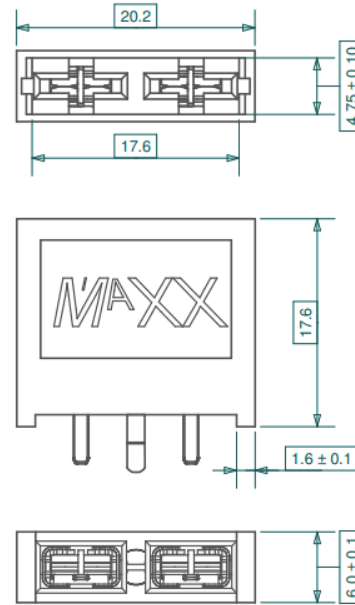
- 2x1 (2-pin) KHP102 Sn plated fuse receptacles (H1810-2x1)
- 2x4 (8-pin) KHP102 Sn plated fuse receptacles (H1810-2x4)
- Standard PA66-GF15 UL94 V-0 body material
- Guiding and Locking pin to stabilize and fix mounting on PCB
- Market conform and compatible PCB hole pattern (see drawing)

PCB layouts



www.ae-industries.nl

PHOTO / TECHNICAL DRAWING



DIMENSIONS

L x W x H: 20,2 x 6 x 17,6 (+4) mm

PARTS TABLE

Part nr.	Description
FH1810-2x1	Circuit board holder 2x1 pin for SBF1500, SBF1800 and SBF1900 series (1 position)
FH1810-2x4	Circuit board holder 2x4 pin for SBF1500, SBF1800 and SBF1900 series (1 position)

TECHNICAL SPECIFICATIONS

Body: PA66-GF15, black
Contacts: KHP 102 R520, Sn plated

normOTO PCB FUSE HOLDER