

normOTO FUSE HOLDER - TERMINAL CONNECT

PART NR.

See parts table

COUNTRY OF ORIGIN:

Italy

STANDARDS:

REACH and RoHS compliant

CHARACTERISTICS

- 6.3 mm in-line horizontal tab connects
- Open (FH1020, FH1120) or enclosed tab connects (FH1180)
- Standard PA66 (FH1120, FH1180) or robust bakelite (FH1020) body material
- Stackable, to create multi-position holder
- Integrated mounting brackets (FH1180)

PHOTO / TECHNICAL DRAWING



DIMENSIONS

L x W x H: 28,6 (+17) x 10,5 x 27 mm (FH1120)
45 x 14,6 (+2,9) x 25,3 mm (FH1180)

PARTS TABLE

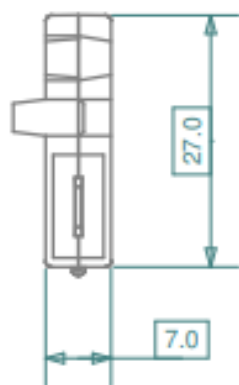
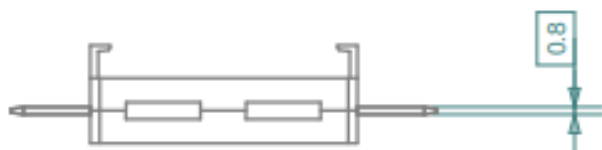
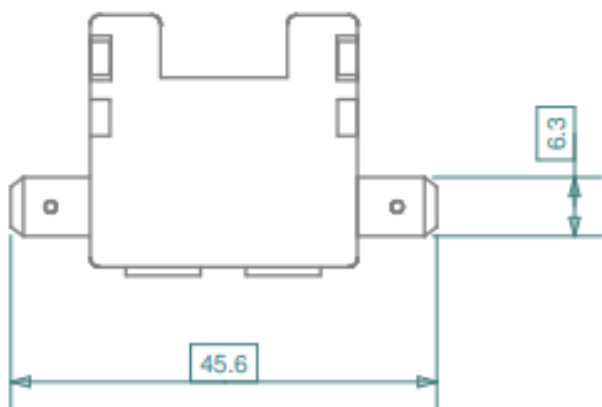
Part nr.	Description
FH1020*	Holder bakelite with horizontal open tabs for SBF1500 and SBF1900 series (1 position)
FH1120	Holder PA 6.6 with horizontal open tabs for SBF1500 and SBF1900 series (1 position)
FH1180	Holder PA 6.6 with horizontal enclosed tabs and mounting brackets for SBF1500 and SBF1900 series (1 position)

* No drawing available

TECHNICAL SPECIFICATIONS

Body: PA66, black (FH1120, FH1180)
Bakelite, black (FH1020)
Contacts: CuZn, 6.3x0.8 mm tabs

FH1120



FH1180

