

**PART NR.**  
**AT1000P**

**COUNTRY OF ORIGIN:**  
**Netherlands**

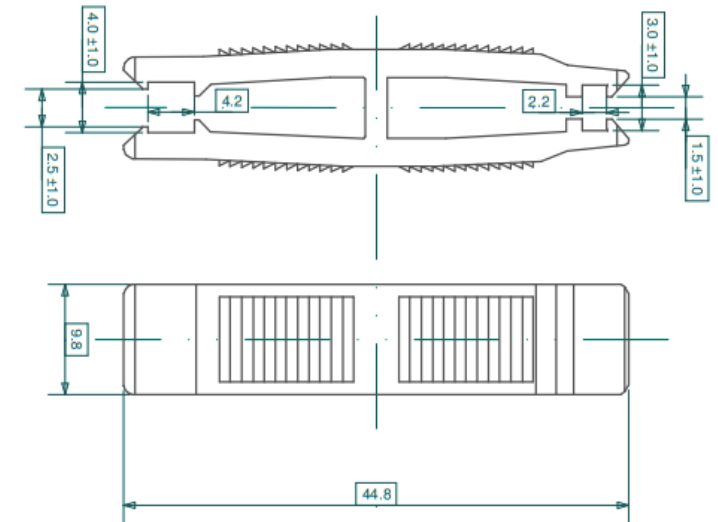
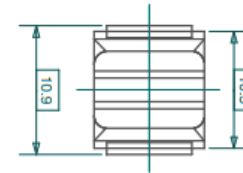
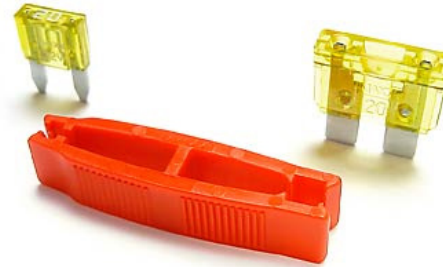
**STANDARDS:**  
**REACH and RoHS compliant**

**CHARACTERISTICS**

- Twin puller for normOTO and miniOTO blade fuses
- Polypropylene (PP) material, red colored
- Dimensions 45 x 10mm

**mini- & normOTO FUSE PULLER**

**PHOTO / TECHNICAL DRAWING**



**DIMENSIONS**

L x W x H: 44,6 x 10,9 x 9,8 mm

**TECHNICAL SPECIFICATIONS**

Body: PP, red